

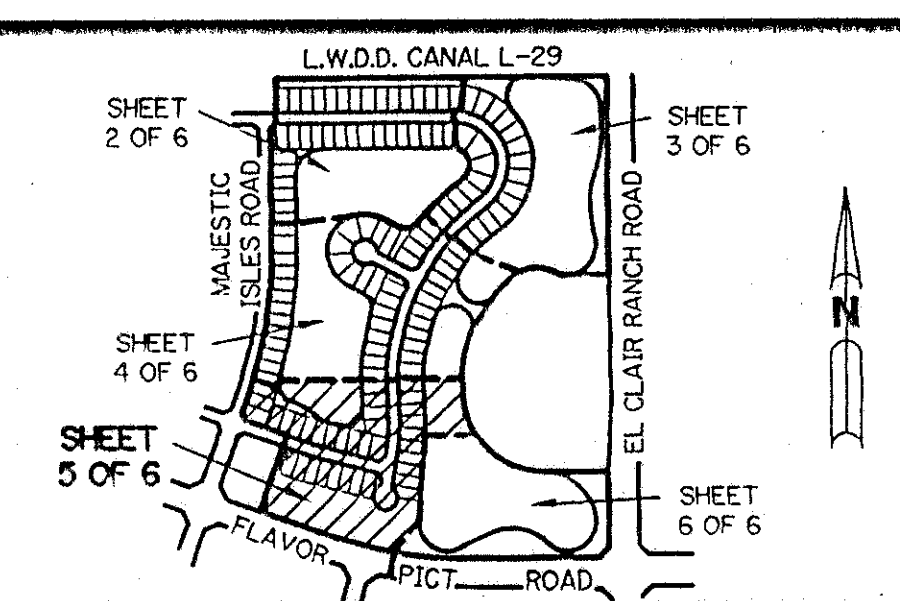
PLAT OF CORAL LAKES IV

BEING A REPLAT OF A PORTION OF TRACT "A" OF THE PLAT OF CORAL LAKES AS RECORDED IN PLAT BOOK 67, PAGES 197-198, LYING IN SECTION 3, TOWNSHIP 46 SOUTH, RANGE 42 EAST, PALM BEACH COUNTY, FLORIDA

APRIL, 1993

SHEET 5 OF 6

97
P.E.T. 614-017
ALLUC. #0001
NO SCHOOLS I
5/3/3/K



KEY MAP
N.T.S.

MATCH LINE "C"
SEE SHEET 4 OF 6

MATCH LINE "C"
SEE SHEET 4 OF 6

$R=1871.00'$
 $\Delta=20^{\circ}05'29''$
 $A=656.09'$
(TOTAL)

$R=668.75'$
 $\Delta=23^{\circ}42'43''$
 $A=276.76'$
(TOTAL)

PLAT OF CORAL LAKES TRACT "A" (P.B. 67, PGS. 197-198)

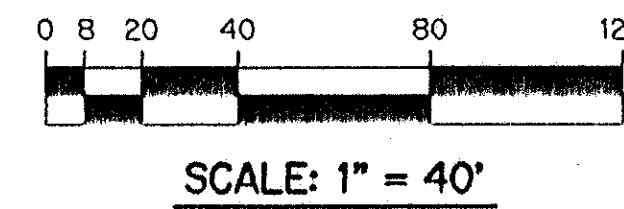
LIMITS OF PLAT

$R=350.00'$
 $\Delta=85^{\circ}00'54''$
 $A=519.33'$
(TOTAL)

WATER MANAGEMENT TRACT NO. 6 (DRAINAGE EASEMENT) SHALL BE MAINTAINED BY THE CORAL LAKES ASSOCIATION, INC., WITHOUT RECOURSE TO PALM BEACH COUNTY, FLORIDA 8.285 ACRES

WATER MANAGEMENT TRACT NO. 2 (DRAINAGE EASEMENT) SHALL BE MAINTAINED BY THE CORAL LAKES ASSOCIATION, INC., WITHOUT RECOURSE TO PALM BEACH COUNTY, FLORIDA 10.221 ACRES

- LEGEND
- L.A.E. - LIMITED ACCESS EASEMENT
 - R - RADIUS
 - Δ - DELTA ANGLE
 - P.B. - PLAT BOOK
 - P.G.S. - PAGES
 - O.R. - OFFICIAL RECORD
 - P.U.D. - PLANNED UNIT DEVELOPMENT
 - P.L.S. - PROFESSIONAL LAND SURVEYOR
 - N.R. - NOT RADIAL
 - - PERMANENT REFERENCE MONUMENT, PLS #4213
 - - PERMANENT CONTROL POINT, PLS #4213
 - O.E. - OVERHANG EASEMENT
 - U.E. - UTILITY EASEMENT
 - D.E. - DRAINAGE EASEMENT
 - F.E. - FLOOD PLAIN EASEMENT
 - O.S. - OPEN SPACE
 - O.R.B. - OFFICIAL RECORD BOOK
 - R.O.W. - RIGHT-OF-WAY
 - L.M.E. - LAKE MAINTENANCE EASEMENT
 - L.M.A.E. - LAKE MAINTENANCE ACCESS EASEMENT



THIS INSTRUMENT PREPARED BY
PERRY C. WHITE P.L.S. 4213 STATE OF FLORIDA
LAWSON, NOBLE AND ASSOCIATES, INC.
ENGINEERS PLANNERS SURVEYORS
WEST PALM BEACH, FLORIDA

0614-005

CORAL LAKES IV

74/97

TAR-456

SUBDIVISION Coral Lakes IV
PAGE 97
FLOOD MAP # 200A
QUAD # 26
SE
ZIP CODE 33437
P.L.S. NAME
DATE